



Sheltie Showdown



A publication of the Central Indiana Shetland Sheepdog Club

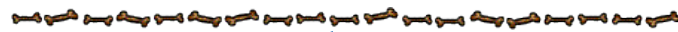
July 2011

Club Meetings

CISSC holds membership meetings at the Circle City Veterinary Specialty & Emergency Hospital, 9650 Mayflower Park Drive, Carmel, IN 46032. We meet in the Rehab Room on the ground floor. This room has a private entrance on the right side of the building. *Note: meetings start promptly at 7:30 p.m. and end promptly at 9:30 p.m.* Well-behaved dogs and puppies are welcome.

Directions to Circle City Vet Clinic: From I-465, take exit 27, U.S. 421/Michigan Road. Go north on 421/Michigan Road to 96th Street and turn left (west). Turn right on Mayflower Park Drive. 9650 is on the left.

Remaining membership meetings for 2011: May 6th, **July 9th picnic**, Sept. 9th, Nov. 4th. Board meetings for 2011: Aug. 5th, October 7th.



July 9th Picnic

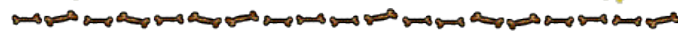
Our Picnic and next Membership Meeting will be held on Saturday, July 9th from 11:00 a.m. to 4:00 p.m. at Doug & Kathy McKee's.

CISSC will provide meat, soft drinks and table service.

Please bring a covered dish to share, chairs and exercise pens for your dogs.

The picnic flyer and directions to McKee's home are included in this newsletter.

Be sure and R.S.V.P. to Doug & Kathy.



2011 Officers

President: Kathleen Morphew
Vice President: Carole Creech
Treasurer: Doug McKee

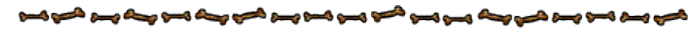
Recording Secretary: Cheryl Sharp
Corresponding Secretary: Kathy McKee

Board of Directors

Jaye Athy
Elizabeth "Babs" Beck
Bettie Hartsock
Kathy Underwood

Standing Committees

Agility Trial: Babs Beck
Awards: Kathleen Morphew
Education: Carole Creech
Equipment: Doug McKee
Historian: Kathleen Morphew
Judges Selection: Carole Creech
Legislative: Carole Creech
Librarian: Karen Burton
Membership: Kathy McKee
Policies & Constitution: Cheryl Sharp
Sheltie Info Line: Tom Schultz
Showdown: Carole Creech
Sunshine Committee: Kathleen Morphew
Ways & Means: Karen Burton
Website: Jaye Athy
Club Website: <http://www.ciissc.net>



2011 CISSC Upcoming Events

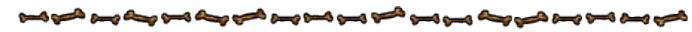
Fall Agility Trial (pending AKC approval)

November 19-20, 2011

Pawsitive Partners Dog Training Center

Beech Grove, IN

Judge: Blair Kelly



President's Corner

Once again we are reminded that we are at the mercy of Mother Nature. We have seen on TV the faces of dogs and cats that are homeless and left in a shelter due to the major tornadoes this spring. This past Monday the heavy rains made it impossible for some people to get to their homes or out of their homes without emergency aid.

I know that my closest shelter is the Red Cross building just a few miles from here. And I know that they do take animals - although I don't know if there is a limit on the number of animals a person can bring with them. In my car are a leash and some plastic bags; and when we have severe storm warnings, I put dog food, water, and a flashlight in my car. What I don't have with me are vaccination records which I would think I would need. I am more ready to take Trinket to an emergency shelter than I am ready to take me!

There is always the possible need for emergency help if something happened to you - do you have a plan in place for someone to step in and take care of your Shelties in case you could not get to them?

Do you have evacuation and emergency care plans in place for your Shelties? Do you know where you could go and take them with you? Do you have a clear plan of who should be notified in case you become ill or are in an accident? And do you have that plan referenced along with the ID you carry in your wallet?

Hopefully, not a single one of us will ever need to utilize these plans. I happen to think it is better to have a plan and never need it than to need a plan and not have one. Just some food for thought!

Sincerely,
Kathleen Morpew

About the Newsletter

The *Sheltie Showdown* is the official newsletter of the Central Indiana Shetland Sheepdog Club and is published six times per year. Subscriptions are free to members and to other clubs on an exchange basis. Non-members may subscribe by contacting the editor for the current subscription price. Subscription is free to non-members if requested via email. The deadline for news and advertising is the 15th of the month before publication. Send news and advertisements to: *Sheltie Showdown* c/o Carole Creech, 12945 Fleetwood Drive, North, Carmel, IN 46032 or email whitehall.shelties@yahoo.com.

Reprints: Other publications may reprint articles from the *Sheltie Showdown* provided credit is given to the author and this newsletter. The CISSC logo is the exclusive property of the club and for its use only. Artwork, except for paid advertisements, may be used if credit is given.

Note: Articles, opinions and advertisements contained in the newsletter do not necessarily constitute an endorsement by CISSC or its editors. Editors reserve the right to edit all submitted materials.



Bragging Rights!



From Karen Adams:

Gilda (Baccara Alpenglo Ms Chevious NJP) earned her 3rd Novice Standard Preferred leg on 5/14/2011 at the Indiana Collie Club agility trial under Judge David Hirsch to **complete her NAP title! (NEW TITLE!)** She finished with a first place. On 5/15/2011, Gilda earned an Open Preferred JWW leg with a first place finish under Judge David Hirsch at the ICC. On 5/28/2011, Gilda earned her first Open Standard Preferred leg with a first place finish under Judge Mary Mullen at the Greater Lafayette Kennel Club agility trial.

Piper earned a Novice FAST leg on 5/28/2011 with a first place finish under Judge Mary Mullen at the Greater Lafayette Kennel Club agility trial.

Summer, Alpenglo's Summer Breeze, ptd has been bred to Ch Road's End Obvious Conclusion. Summer has missed twice previously and then decided to skip seasons for almost 2 years. An ultrasound on 6/16 confirmed her pregnancy and showed at least 4 puppies on one screen shot! I'm very excited about this litter.

From Jaye Athy:

Bitty, Mandalay A Rose Is A Rose, was Reserve Winners Bitch at the Miami Valley Shetland Sheepdog Club show in Troy Ohio under Judge Jo Virden from the 6-9 class.

From Babs Beck:

Bravo earned his **MACH 2 (NEW CHI!)** at the Indiana Collie Club Agility trial May 15.

From Carole Creech:

Liberty, Jesstar Sephora, was Winners Bitch and Best of Opposite Sex on June 11th and 12th, at the McKinley KC shows in Canton, OH, each for 1 point under Rick & Debra Gschwender respectively. These are Liberty's first wins! Also, she was Reserve Winners Bitch on Friday, June 24th at the Brevard KC show in Orlando, FL under Judge Charles Trotter.

From Bettie Hartsock:

At the Greater Lafayette Kennel club agility trial, Sat 5/28 & Sun 5/29 under Judge Mary Mullen, Qsim's Tornado Warning, UD, RX showed with his new best friend Rosie Lerner on Sat and Sun Trial. Saturday was the first time Twister and Rosie ever trialed together; in fact it was Twister's first time to run a full course. They came close but didn't qualify. On Sunday, Twister seems to really now understand what was wanted. In Novice Standard class he scored a 100 with a time of 48.51 with course time at 69. Then in Novice Jumpers he again scored a 100 with a time of 29.49 with a course time of 44. On Saturday, June 25th, at the Agility club of Indiana trial, Qsim's Tornado Warning, UD RE aka Twister showing again with his agility buddy Rosie Lerner was 3rd in Novice Jumpers for his second Q. Course time was 39 seconds and he did it in 38.80 with a score of 95. Then on Sunday Twister qualified in Standard Novice agility with a first place. Course time was 69 seconds and Twist did it in 48.51 with a score of 100.

From Jane Masters:

MACY, Prelude's Prada, NA, NAJ, Dog Training Club of Champaign Urbana, STD NOV -3rd place, Apr 30th; JWW NOV 1st place Apr. 30th; 1st place May 1st GLKC - JWW 2nd place May 30th (**NEW TITLE**). Hoosier KC Nov. Std. - 1st place. ACI - Nov. Std. 2nd place, June 25 (**NEW TITLE!**).

TEAK, Prelude's Protocol, PT, NA, NAJ, Dog Training Club of Champaign Urbana STD NOV 1ST PLACE Apr. 30th; STD NOV 2ND PLACE May 1st (**STD. NOV TITLE!**). HOOSIER K.C. NOV.JWW - 1ST June 10th; Nov. Fast - 1st June 10th; Nov. Fast - 1st June 11 (**NEW TITLE!**). JWW NOV 2ND PLACE ACI - JWW 1st June 25, (**NEW TITLE!**); ACI - Open Std. 3rd Place June 25th.

ZEVA, Prelude's Panache, RN, HSs, Herding Std. Sheep - Apr. 30, May 1 - passed PBCA Trial; Herding

Std. Sheep - May 8 - DelRay Trial passed (**NEW TITLE!**).

ELI, Prelude's No Boundaries, PT - passed May 1 PBCA Trial.

BAKU, Prelude's Show 'N Tell, RA - Co-owned with Liz Carroll, Nov. Leg 195 - May 14, Golden Ret. Club Nov. Leg 194 - 1st place, Miami Valley SSC.

BECCA, Prelude's Bec'N Call, HT, AX, AXJ, GLKC: Exc. B JWW Q - May 30th; HOOSIER KC Exc B. Std 3rd Place.

From Kathy McKee:

Bliss, Coastal Keeara Euphoria MX, MXJ, CGC, took 3rd place in Excellent Jumpers at the Lafayette KC agility trial on May 29th with judge Mary Mullens. Bliss earned her MX title (**NEW TITLE!**) at the Derby City Agility Club's trial in Buckner, KY on Saturday June 3 under Judge Lisa Potts. She went on to Double Q that day for double Q #3.

At the Kokomo Kennel Club's dog show on May 22nd, Derby, Keeara Down and Derby, was Winners Bitch and Best of Opposite Sex under Judge Walter Sommerfelt for her first point.

Sunny, CH MACH2 Keeara's Glorious Sunrise OF, PT, CGC, VCX, Q'd and took 4th place in Ex Jumpers on May 28th and May 29th at the Lafayette Kennel Club with judge Mary Mullens. At the Derby City agility trials he doubled Q'd on June 3rd and June 4th with judges Scott Stock and Lisa Potts. At the Hoosier Kennel Club's agility trial on June 10th he Q'd and took 2nd place in Ex Standard with Judge Rob Robinson.

From Char Urban:

Dutchess completed her Basic Obedience and scored 175 out of 200!! I am so proud of her!!



Shelties Rock!

Here is a little bit from the historian...

20 Years - it was finally over. We had spent hours and hours of work and years preparing for the 1991 National. One of my best personal memories was turning the heavy plastic sheets of cedar chips into large trash bags for the Convention Center personnel to pick up. Once that was done the room was really clean! Then, if I remember correctly, the CISSC cleanup crew went to Friday's and had a large brunch!



MAKE TRACKS TO Indy 1991

**1991 ASSA National
Indianapolis, IN**

Monday
Symposium

Tuesday
**Obedience
Futurity**

Wednesday-Saturday
Breed Judging

Wednesday
Pig Roast Buffet
Hayrides, Hoedown and Stroll

Saturday
Indiana Roof Ballroom
Dance indoors under the stars

*** June 3-8, 1991**
**Indiana Convention
Center & Hoosier Dome**
Ramada Inn Downtown

*Pending AKC Approval
©1989 Central Indiana Shetland Sheepdog Club, Inc.

Shetland Sheepdog Breed Requirement Testing

Hip Dysplasia

- OFA Evaluation – OR • PennHIP Evaluation

Eye Clearance

- CERF Evaluation – Recommend evaluation every year until age 5, every 2 years thereafter until age 9.

von Willebrand's Disease

- OFA Evaluation from VetGen. First Generation Offspring of tested dogs eligible for Clear By Parentage

Multiple Drug Sensitivity

- Washington State University Veterinary Clinical Pharmacology Lab test results registered with the OFA – WSU VCPL. First Generation Offspring of tested dogs eligible for Clear By Parentage

Autoimmune thyroiditis (Optional)

- OFA evaluation from an approved laboratory – Recommend testing at ages 2, 4, and 7.

Collie Eye Anomaly (Optional)

- Optigen test results registered with the OFA. First Generation Offspring of tested dogs eligible for Clear By Parentage

Congenital Cardiac Database (Optional)

- Recommend exam by board certified Cardiologist or board certified specialist in internal medicine.

Elbow Dysplasia (Optional)

- OFA Evaluation

Temperament Test (Optional)

- American Temperament Test Society results submitted to OFA

– via the Canine Health Foundation



AKC News

Effective with the October 2011 issue, the AKC *Gazette* will be reformatted from a print magazine to an electronic PDF format. The *Gazette* monthly PDF will be posted for free access on www.akc.org. Popular *Gazette* features that will be retained in the PDF include the breed columns, AKC Updates and the Secretary's Pages. For upcoming event information, the AKC website provides a convenient Events Search function which has recently been enhanced with many new features to make searching for an AKC event easier and faster.

The last printed magazine will be the September 2011 issue. Paid subscriptions after that will be filled with the equivalent number of issues of the *AKC Family Dog* magazine.

50,000 stones

TRENDS IN BLADDER STONES

OVER A 10-YEAR PERIOD, the Canadian Veterinary Urolith Centre analyzed more than 50,000 stones. This impressive number shows just how common bladder stones are. As well, the centre found an interesting trend – the type of stone found in dogs is changing. We're not sure why.

The stones they analyzed were obtained through bladder surgery, or the stone passing out the urethra (naturally or assisted). The cost for the lab analysis was paid for by Medi-Cal/Royal Canin Veterinary Diets.

Canine bladder stones come in all sizes, shapes and textures. They can be solitary or multiple. Rolling around inside the bladder, the stones create irritation, pain, may cause a blockage of the urethra, and possibly make the dog susceptible to recurrent bladder infections.

Stones (also called uroliths) form when there is too much mineral in urine. Think of a cup of water

and a pound of sugar. As you add sugar to the water, you'll eventually reach a point where no more sugar will dissolve. The solution is saturated. If urine is similarly saturated with minerals, the minerals can precipitate out to form stones.

Types of stones

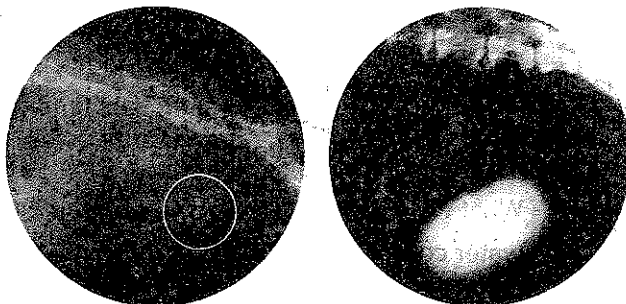
The largest stones seen in dogs are struvite stones, reaching 10 centimetres or more in diameter. However, more commonly, they occur as multiple smaller stones crowded within the bladder.

The majority of struvite stones form in bitches, arising secondary to bladder infections. Growing bacteria raise the urine pH, making it more alkaline. Because struvite minerals dissolve poorly in alkaline urine, this makes crystals form, which can then coalesce into stones.

The other risk factor for struvite stones is feeding high amounts of vegetable protein. This type of diet produces an alkaline urine compared to diets with more meat protein.

Another stone seen in dogs is the oxalate urolith. These stones are usually linked to high calcium levels in the urine. There can be a genetic predisposition to this risk factor. Breeds at high risk for developing oxalate stones include the Lhasa Apso, Miniature Poodle, Miniature Schnauzer, Yorkshire Terrier, Shih Tzu and Bichon Frise.

Urate stones have long been considered a Dalma-



(Left) A nest of canine bladder stones
(Right) A huge stone in a small dog

tian problem. These dogs can carry a genetic defect that makes them prone to forming this specific type of urolith. This recessive trait is also believed to occur in other breeds, such as the Bulldog. Dogs suffering from liver ailments, such as portosystemic shunts, are also susceptible to this type of stone.

Miscellaneous stones make up a final tiny fraction of all the stones seen in dogs. These include xan-

thine, calcium phosphate, silica, cystine and sodium pyrophosphate.

Prevention

Preventing each type of stone calls for a different approach. This is why it is so important to have stones analyzed when they are removed.

Struvite is unique in that the stones can some-



Trends in canine bladder stones – struvite to oxalate

Back in the 1980s, veterinarians mainly saw struvite stones in dogs. Other stones were not that common. This has changed remarkably.

In a U.S. study, the prevalence of oxalate stones rose from five per cent of submissions in 1981 to 42 per cent in 2005. Similarly, struvite has dropped from 78 per cent to 38 per cent. There are several ideas about why oxalate stones are becoming more prevalent.

One theory is that owners are feeding acidified commercial diets aimed at preventing struvite stones. An acidic pH favours the formation of oxalate stones.

There may also be changes in the dietary content of calcium, magnesium, phosphorus and oxalate. We try to extrapolate from human studies, but the effect of minerals is inconsistent. There are no definitive canine studies that link food constituents to preventing or promoting stone formation. Without the data to back it up, it is hard to recommend certain diets and ingredients.

There is a link between excess calcium in the urine and oxalate stone formation. It is theorized that dogs predisposed to stone formation may absorb significantly more calcium from the gut than normal dogs. This calcium is then eliminated in the urine. How veterinarians can manipulate this to lower the amount in urine is still being investigated.

The preponderance of oxalate stones could also be due to selective submission of the stones. When veterinarians diagnose stones, they may try dissolution diets in an attempt to dissolve them. If the stones go away, it proves they were struvite. On the other hand, if they don't dissolve, surgery is done and these stones are submitted to the lab. Chances are these are oxalate. This boosts the number of oxalate and lowers the number of struvite analyzed.

Researchers have also found a difference in urine between breeds of dogs. A study compared Miniature Schnauzers against Labrador Retrievers. The Miniature Schnauzers urinated significantly less often than the Labrador Retrievers and had a lower urine volume. Miniature Schnauzers also had significantly more calcium in their urine. Both of these are predisposing factors for oxalate stone formation and could account for the high prevalence of oxalate uroliths in the breed.

Finally, people's lifestyles may be trending toward smaller breeds, which are prone to oxalate stone formation. These dogs also live longer, which is also a contributor – oxalate uroliths tend to occur more often in older dogs.

What we do know is that increasing the amount of water consumed results in the production of more dilute urine and a lower concentration of minerals. This is the best way to avoid uroliths.

The Search for Genes that Control Growth in Purebred Dogs

Dr. Nathan Sutter is a geneticist at Cornell College of Veterinary Medicine working to understand growth control in purebred dogs. His laboratory is searching for genes that make dogs big or little. Because dog breeds vary enormously in size, they are a powerful resource for finding these genes.

Below is his request for DNA samples to aid in his research:

Dear Dog Owner,

I'm writing to ask for your help in finding genes that make dogs big or little. Would you be willing to donate blood samples from your purebred dogs, or do you know other owners who may help? Contributing samples is easy. Please see the details below and contact us if you're interested.

Thank you very much for helping to make our dog genetics research possible!

With kind regards,
Nathan Sutter, Ph.D.
Assistant Professor of Medical Genetics
Cornell College of Veterinary Medicine
C1-118, Vet Medical Center
Ithaca, NY 14853

Phone: [607-253-3592](tel:607-253-3592)
Email: sutterlab@cornell.edu
<http://www.vet.cornell.edu/faculty/Sutter/research.htm>

How you can contribute:

Email us back to learn more about our research or arrange a mailing. We'll send you instructions, a consent form and empty blood collection vials in a convenient mailer that is approved by the postal system. Blood can be shipped back to us at ambient temperature (no cold packs are needed). Most people ask their veterinarian to collect the blood during a routine visit.

For our genetic research we also ask you to collect a set of body measurements of each dog; we will send you a measuring tape and set of illustrated instructions. Measurement takes 20-25 minutes. Finally, we ask for a pedigree so we can avoid studying close relatives. This is also why, if you should provide samples from more than one dog, we'll ask for dogs that are not closely related (no shared parents or grandparents). Note, we will NOT identify any of your dogs by registered name or owner name in any of our scientific or lay communications about our work.

About our lab:

We helped to find the first identified body size gene in the domestic dog. This gene, insulin-like growth factor-1, is known to also play roles in human height, cancer, growth and aging. We are currently continuing the search for dog size genes and also looking for retrotransposons, which are a kind of mutation common in the dog genome. Retrotransposons are known to cause several

different diseases in the dog (a sleep disorder, myopathy, eye disease, etc.). For both the size and retrotransposon studies we need samples from a wide variety of dog breeds. We are also collecting samples from the Yorkshire Terrier breed to enable us to study the genetics of protein-losing enteropathy, an extremely debilitating disease.

Although I am a dog geneticist, my research in body size genetics has broadened out in the last three years: my lab now also studies size in horses and rabbits as well as in dogs. If you own purebred horses or rabbits and might like to contribute samples from them, please contact us for more information. Thanks!

Sutter lab members who may correspond with you: Jeremy Allen, Eve Waters, Carissa Smith, Maryanne Luther, Mytien Nguyen, Nikki Kimura and myself



CISSC Picnic!!!



When: Saturday, July 9, 2011 from 11:00 a.m. to 4:00 p.m.*



Where: Doug & Kathy McKee's**
8040 Oakhill Drive
Indianapolis, IN 46250
317-578-8687
sheltielove2@yahoo.com

Bring: A Covered Dish to Share & Lawn Chairs

CISSC will provide Meat, Soft Drinks and Table Service

R.S.V.P. to Doug & Kathy by Friday, July 1st
(Let them know what you are bringing!)

Dogs and Puppies are Welcome - **Please Bring Exercise Pens**

*Rain date is Saturday, July 16th

**See directions on next page



CISSC Picnic!!!



Directions to Doug & Kathy McKee's Home

Take I-465 to Allisonville Road (exit 35). Go south on Allisonville Road to 79th Street and turn right (west). Take 79th Street to Oakhill Drive and turn right (north). 8040 Oakhill Drive is on the left - you will see a Sheltie Sign at the end of the driveway.

